



IN THIS ISSUE

- Foundation Announces New Area of Emphasis
- PCGF Accepts Grant Applications

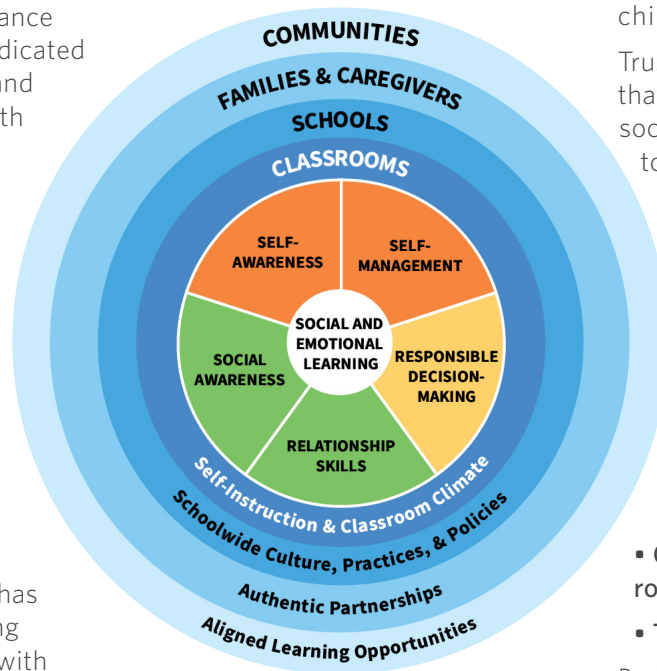
- Making an Impact
- Jubilee Kitchen & Bethlehem Haven Expand
- Catapult Awarded Grant
- Transitions
- Mark Your Calendars

Foundation Announces New Area of Emphasis

Now Accepting Grant Applications

The Pittsburgh Child Guidance Foundation (PCGF) is dedicated to improving the health and well-being of children and youth living in Allegheny County by providing grants and collaborating with public and private organizations to implement innovative policies, practices and programs. PCGF and valued partners collaborate to impart a positive impact on the lives of children and youth by changing their behavior, their minds, their experiences and, ultimately, their lives.

For the past nine years, PCGF has focused its efforts on mitigating the circumstances of families with children who are experiencing homelessness, often by supporting parents who serve as the children’s primary caregivers. During and immediately following the pandemic, Foundation personnel realized that the magnitude of related issues — skyrocketing housing costs, mental and physical health, the shortage



of options for the unhoused — was overwhelming. In 2023, PCGF’s Executive Director initiated a series of discussions with Trustees and service providers to determine ways the Foundation could have a more direct, positive impact on the lives of disadvantaged

children and youth.

Trustees agreed to focus on programs that help children and youth with social and emotional development to enable them to learn skills that will serve them for many years to come.

PCGF seeks to support programs that focus on these goals:

- Encourage completion of high school
- Increase self-confidence
- Foster interest in exploration of career opportunities
- Connect children and youth with role models
- Teach life and work-ready skills

By focusing on this area of emphasis, the Foundation will continue to support many programs that aid youth experiencing or at risk of homelessness.

The tangible and intangible skills children develop through social and emotional learning (SEL) programs will help them to thrive in the future. ■

Grant applications will be accepted through **October 11, 2024**.
 Visit www.PittsburghChildGuidanceFoundation.org for more information
 or call 412-434-1665.

PITTSBURGH CHILD GUIDANCE FOUNDATION 2024 BOARD OF TRUSTEES

Paul David Spradley
PRESIDENT

Michele Rone Cooper
SECRETARY

Aaron Aldrich
Cara Ciminillo

Megan Nestor
Hon. David Spurgeon

EXECUTIVE DIRECTOR
Pamela W. Golden

Joan Eichner
VICE PRESIDENT

Brian S. Allen
TREASURER

Jason A. Lando

James W. Weems, Jr.

OUR MISSION: Improve the emotional health and well-being of children and youth living in Allegheny County by providing grants and collaborating with public and private organizations to implement innovative policies, practices and programs.

Making an Impact

We heard about the challenges many of the clients of our grantees face that can lead to homelessness: domestic violence, overcoming substance use, job loss, incarceration of a parent leading to loss of income, death of a parent, unsafe living situations forcing them to move, and/or significant mental or physical health challenges. We are extremely grateful to you, our community partners, who are doing the heavy lifting to improve the lives of those in need.

Thank you to...

► **Allegheny Valley Association of Churches** used its grant to house 61 people, 35 of whom were children, who are experiencing homelessness become more stable by relocating to affordable housing, enrolling the children in school, securing support from social service agencies, and/or gaining employment or improving income streams.

► **Allies for Health + Wellbeing** served clients living with HIV and their children. The organization's overarching goal was to keep families together by providing housing and utilities. Seventy-five percent of Allies clients were able to achieve their non-medical goals. Some families were able to move into affordable and better quality housing or secure better employment.

► **Angels' Place** has for 39 years offered crucial services to parents and their children. With its PCGF grant, Angels' Place helped 32 parents with 49 children facing multiple risk factors move to an environment where they can prepare for future success in school and life. Success in the Family Support outcomes included 67% of parents enrolled in college, 7% in high school and 26% in career training programs; 90% maintained successful employment; and assessed children met 97% of developmental milestones in age appropriate categories.

► **Bethlehem Haven's** Safe at Home homeless prevention program served 340 unduplicated individuals with financial bridge services to



A student with educator in Winnie's Wagon

stop eviction, utility shut-off and job loss. By providing ongoing case management, 75% of those served remained in current, safe, affordable housing.

► **Beverly's Birthdays** provided a host of Birthday Cheer programs for children living in shelters. Two-hundred eighty seven children living in 13 shelters received birthday gifts during 48 group parties, and parents of 25 newborns received care packages.

“ The best part about their programming is it makes you feel like you are not alone. These people genuinely care. ”

Program participant

► **Big Brothers Big Sisters** mentor2.0 combines evidence-based youth mentoring practices with a graduation success curriculum and online communication to boost academic achievement, decrease high school dropout rates and prepare youth for postsecondary opportunities.

Approximately 30 students either experiencing homelessness or at risk of it from two area high schools participated. In total, more than 325 students received services.

► **Bridge to the Mountain** is a street outreach initiative that provides emergency shelter for women with children and expectant mothers who are experiencing homelessness obtain resources to bring stability to their lives. More than 75 people were helped.

Duquesne University School of Nursing's 13th annual symposium focused on the needs of people after incarceration. More than 200 healthcare professionals, social workers, students and other service providers attended the two-day conference.

► **Familylinks** provided critical financial assistance to families at risk of or experiencing homelessness who were transitioning to temporary or permanent housing. Familylinks used its grant to prevent homelessness from occurring or to quickly resolve homelessness when it does occur by eliminating barriers to accessing safe, stable and affordable housing.

► **Goodwill of Southwestern PA's** GoodStart Rapid Re-Housing Program for Homeless Families served 40 families with children who had been referred by the County's Human Services Department. Twenty-three families (45 children and 26 adults) were served over a nine-month period. Goodwill uses a holistic approach to help families become stable, attain goals and gain a sense of well-being.

continued on page 3

Thank you to...

continued from page 2

► **Homeless Children's Education Fund** secured Winnie's Wagon, a mobile classroom on wheels to reach the most vulnerable — children and youth who are not staying at shelters — to provide the best in hands-on learning and academic support. Winnie's Wagon served 64 students with an average of 10 visits per child and a total of 205 tutoring sessions; 35 students attended Afterschool and Summer programs.

► **Jeremiah's Place** provided emergency care for 258 unduplicated children from 179 families. These families made 1,128 visits and received the equivalent of 9,767 hours of crisis care. The grant enabled JP to secure new software to document child and caregiver information and analyze the data collected.

► **Jubilee Association's** grant addressed the basic and emotional needs of children of families who are experiencing homelessness by providing stabilizing financial assistance to help them move towards greater self-sufficiency. Jubilee served 159 individuals, including 102 children. One client who lost her job was able to use the financial assistance to pay her rent and utility bills while waiting to receive her unemployment benefits.

► **Light of Life's** Women and Children's Program and Family Shelter prevents or ends homelessness by providing a continuum of care that brings stability in the lives of single mothers in recovery. This rigorous 12- to 18-month program includes subsidized housing, counseling, and workforce training and case management to equip women for a future of self-reliance. One hundred who were homeless were served in the Day Centers and 125 were served in the Family Shelter.



South Hills Interfaith Movement food pantry

► **Serenity Living Transitional Home** provided a safe place to live and learn for young women between the ages of 18 and 23 experiencing homelessness or aging out of foster care. A second non-residential program mentored youth ages 13-23 by helping them to develop personalized blueprints to adulthood. Four of the seven participants in the residential program graduated. Attendance in the life stabilization classes was 94%.

► **Sisters Place** offers a Supportive Housing Program that provided its residential clients with basic needs so they can focus on recovery from addiction, gain financial stability, secure employment and complete their education. Some program participants are teens; others are parents.

► **Sojourner's House MOMS** offered transitional housing and comprehensive supportive services to families in recovery for up to one year. Participants worked on maintaining abstinence, stabilizing their mental health and gaining both employment and housing. Sojourner's staff helped clients secure health and dental care, transportation and other basic needs by removing barriers that could derail their recovery.

► **South Hills Interfaith Movement** meets the needs of individuals and families seeking critical services in the South Hills area. More than

1,200 people received assistance from SHIM that included paying utility bills; access to food, clothing and school supplies; and vital resources that enable them to avoid larger financial crises that put them at risk of becoming homeless.

► **The Salvation Army's** Pathways of Hope Initiative helps families with children or expecting parents obtain greater financial stability, employment or training and increase self-advocacy skills to break the intergenerational cycle of poverty. Eleven families participated with five families completing the program.

► **Tickets for Kids** provides free access for low income and at-risk kids to cultural, sporting and educational venues. With the PCGF grant, Tickets for Kids aided 18 shelters that support youth and families experiencing homelessness. These partners received more than 2,100 tickets.

► **Women's Center & Shelter's** Children's Advocacy Program is an intervention program that provides comprehensive supportive services including medical and dental, and emotional support for children healing from the effects of domestic violence including child abuse. More than 300 children received care. WC&S works diligently to ensure that children stay in school while living in shelter. ■



Jubilee Kitchen groundbreaking ceremony (shown left to right) Campaign Co-Chair Jack McGinley, Senator Jay Costa, Congresswoman Summer Lee, Bishop David Zubik, Executive Director Mark Latterner, Senator Wayne Fontana, Mayor Ed Gainey, County Executive Sara Innamorato, Campaign Co-Chair Archabbot Douglas Nowicki, and County Councilman DeWitt Walton

Jubilee Kitchen & Bethlehem Haven Expand

To enhance services to its clients and meet growing demand, Jubilee Association recently broke ground on a renovation and expansion project. In April, numerous community leaders celebrated the groundbreaking with Jubilee Association Executive Director **Mark Latterner**.

Bethlehem Haven recently celebrated the completion of Phase I of its affordable housing development in Pittsburgh's Uptown neighborhood. Bethlehem Haven's Executive Management and community partners cut the ribbon on 34 affordable housing units. The development is

a trauma-informed, therapeutic supportive services housing program for people who have experienced long-term housing instability. Pittsburgh Mercy, ACTION Housing and Mosites Construction Company are among the partners supporting the project. ■

Catapult Awarded \$3 Million Grant

Congratulations to Catapult Greater Pittsburgh, which recently received a \$3 million grant from JPMorgan Chase to address the area's housing crisis. The organization will use the funds to acquire and rehab vacant or abandoned properties in an effort to stabilize neighborhoods and keep property in the hands of the community and to assist Allegheny County residents who do not have a legal title to the property in their name. ■

Transitions

PCGF mourns the passing of **Gay Fogarty**, former President of the Board of Trustees, who died this past winter following a lengthy illness. We remember Gay as a tireless supporter of the Foundation and its mission. We extend our condolences to the Fogarty family, friends and colleagues.



Congratulations to **Gene Walker**, who was named President and CEO of Tickets for Kids. Gene has a background in finance, education, nonprofit management, and community service. He also serves as Board President and Director for District 9 of the Pittsburgh Board of Public Education.

Mark Your Calendars



Upcoming Board Meetings

- **Tuesday, June 18, 2024**
4:30 – 6 pm
- **Tuesday, September 17**
4:30 – 6 pm
- **Tuesday, November 12**
Board and Annual Meeting
4:30 to 6 pm